



**MANOR ROYAL**

**BUSINESS DISTRICT**

CRAWLEY & GATWICK

Maintenance Team Picture Report

November 2022

The Woolborough Lane cycle path has had a deep clean, clearing weeds/detritus and also leaves. This area will be blown regularly due to this being a well used cycle path.

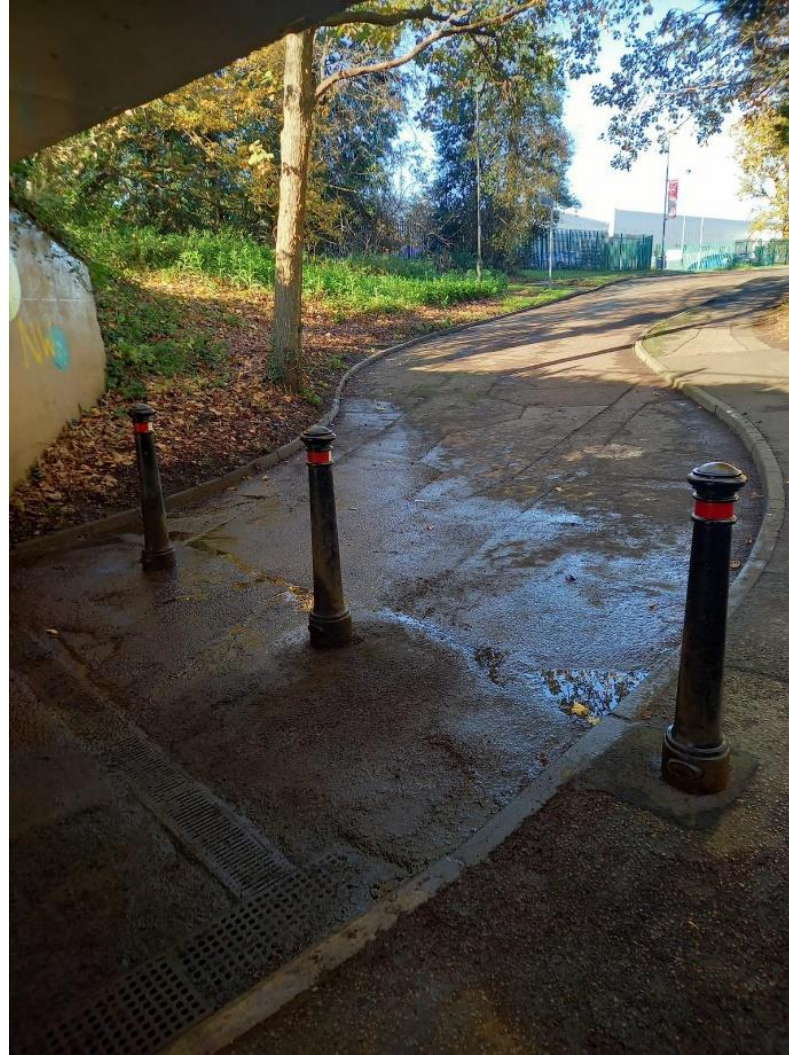




Manor Royal Road has had a lot off attention this month due to the amount of leaves that fall. Our team have been out used our Terrier T10 leaf vacuum to assist us with collecting/mulching the leaves.

Going forwards we will be using our small mechanical sweeper to keep these footpaths clear.

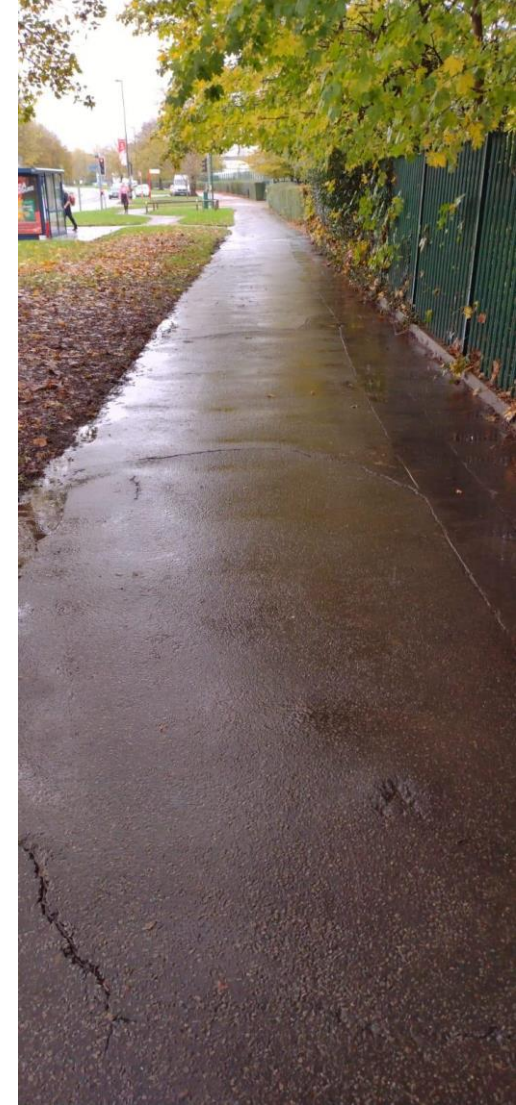




A large build up of leaves and detritus which were covering drains has now been cleared to prevent flooding. We will monitor this area frequently to make sure this is kept cleared.

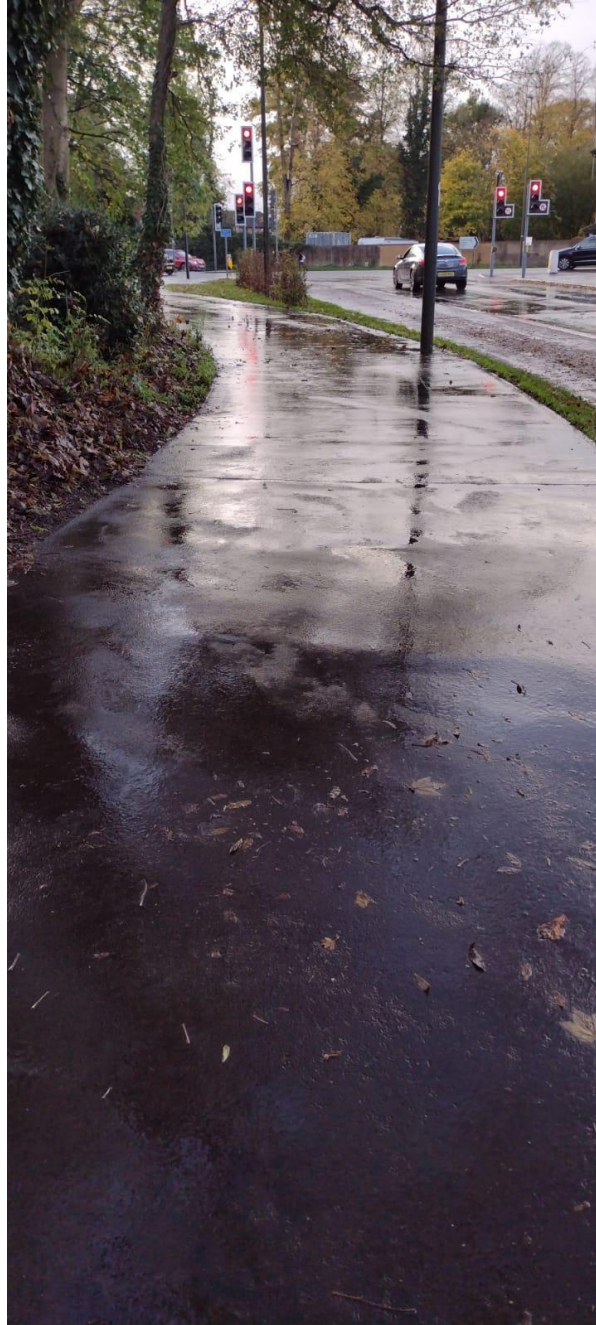
Location – Woolborough Lane Subway





640kg of leaves were removed from just these two areas. (Tinsley Lane/Manor Royal Road)





The Terrace is having weekly visits to ensure all footpaths are cleared, to prevent any slips or trips.



Due to heavy rain, we have had areas of flooding.



Our team have been checking all drains to ensure they are clear to prevent flooding.

Location – Fleming Way/Jenner Road

